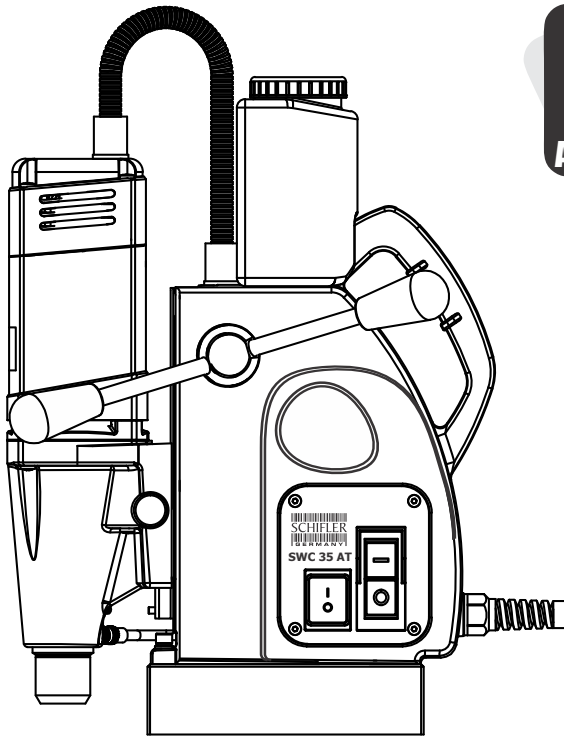


Magnetic Drilling Machine



SWC 35 AT



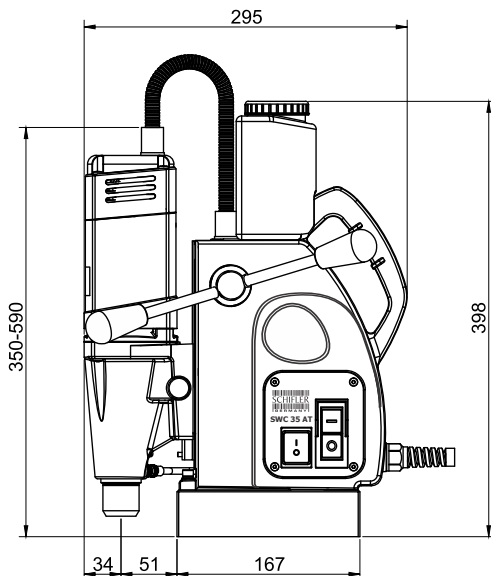
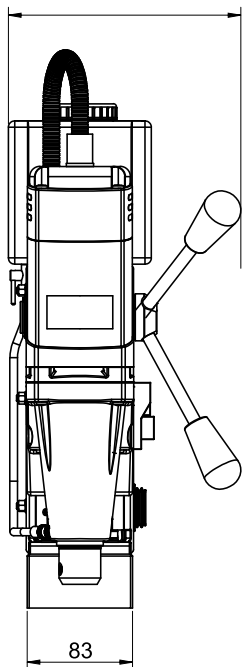
OPERATING MANUAL

Table of contents

1. Description & Technical Data
2. Components Content
3. Safety Procedures
4. Accessories
5. Operating manual
 - 5.1 How to mount tools or adapters in a Weldon arbor
 - 5.2 Drilling with broach cutters
 - 5.3 Drilling with twist drills
6. Exploded View
7. Helpful Tips
8. Troubleshooting
9. Warranty

DESCRIPTION & TECHNICAL DATA

SWC 35 AT



Motor power	1100 watt
Spindle	19 mm (3/4") Weldon
Broach cutter (35 mm length)	Ø12 mm - Ø35 mm
Broach cutter(50 mm length)	Ø12 mm - Ø35 mm
Twist drill	Upto Ø13 mm
RPM	450 min-1
Flexible Stroke upto	240 mm
Weight	15 kg (26,8 lbs)
Magnet power	10000 N
Input supply voltage	220 V
Electro Torque Control	Yes

COMPONENTS CONTENT

1. Packing case	1 No.
2. Cooling Bottle	1 No.
3. Safety Belt	1 No.
4. 2,5 mm Allen Wrench	1 No.
5. 4,0 mm Allen Wrench	1 No.
6. 6,0 mm Allen Wrench	1 No.
7. Instruction Manual	1 No.
8. Magnetic Drill Machine	1 No.
9. Pilot Pin 6x50	1 No.
10. Pilot Pin 8x50	1 No.
11. Drill Chuck Adaptor	1 No.
12. Drill Chuck	1 No.

UNDERSTANDING SAFETY SYMBOLS



DANGER : The possibility of suffering harm , injury or even death if the situation is not avoided during operation of the machine



WARNING : A statement or event that warns of something or that serves as a cautionary example while using the machine



CAUTION : Care taken to avoid danger or mistakes during operation of the machine



NOTE : A brief record of points or ideas written down as an aid to memory while using the machine

When using magnetic drilling machines please follow the general safety instructions for electric power tools.

Please read the manual	Use eye protection	Use ear protection	Use safety helmet
Use safety gloves	Wear appropriate clothing	Disconnect before opening	Use safety chain
Warning for electrical shock	Dangerous environment	Don't use in wet places	Pacemaker warning

WARNING: THIS APPLIANCE MUST BE EARTHED.

1. Always secure the machine with the supplied safety chain before starting to operate, this is to protect the user in case of power failure or breaking loose of the magnet while in use.
2. Always wear safety goggles, gloves and ear plugs.
3. Disconnect from the power source when changing cutters or working on the machine.
4. Always ensure cutter retaining screws are secure – they sometimes vibrate loose in use.
5. Regularly clean the work area and machine., remove swarf and dirt, paying particular attention to the underside of the magnet.
6. With a gloved hand, after switching off the power, remove any swarf which might have gathered around the cutter and arbor before proceeding to the next hole.
7. Remove tie, rings, watches and any loose adornments which might entangle with the rotating parts of the machine.
8. Should the cutter get stuck in the workpiece, stop the motor immediately to prevent personal injury. Disconnect from the power source and push and pull the arbor by hand. **DO NOT ATTEMPT TO FREE THE CUTTER BY SWITCHING THE MOTOR ON AND OFF.**
9. If the machine is accidentally dropped, always thoroughly examine the machine for signs of damage and check that it functions correctly before trying to drill a hole.
10. Regularly inspect the machine and check the nuts and screws are tight.
11. Always ensure when using the machine in an inverted position use special cutting paste or cutting spray which is specially designed for inverted position drilling.
12. Use only spare parts advised by your dealer for magnetic drilling machines.
13. Use the magnetic drilling unit on a clean and flat surface only, to prevent the machine breaking out because of poor clamping force.
14. If you discover any irregularity on machine cables immediately bring the machine to a recognized dealer for a repair or maintenance service.

WARNING : DO NOT USE YOUR MAGNETIC DRILL ON THE SAME STRUCTURE WHEN ARC WELDING IS IN PROGRESS. D.C. CURRENT WILL EARTH BACK THROUGH THE MAGNET AND CAUSE IRREPARABLE DAMAGE.

SAFETY INSTRUCTIONS



WARNING

It is mandatory to read and follow all the safety norms, regulations and instructions given in this Guide before you operate the machine to avoid unwanted and fatal accidents. Follow the mentioned workplace safety measures in the guide strictly to ensure your safety against electric shocks or injuries.

SELF PROTECTION

The machine operators must start their work only after wearing protective gears like eyeglasses, ear muffs, and insulated shoes tightened to the legs ensuring comfortable movement.

Never operate the machine using your feet or remove the slug without wearing the gloves. Never work towards the maintenance of the circuit board if you haven't followed all the rules mentioned above.

MANDATORY RULES FOR THE WORK PLACE

1. Say no to a messy work environment completely. Keep yourself protected against fatal accidents by keeping the area clean.
2. In case the floor is wet, stop the usage of the drill machine immediately. You will expose yourself to the risk of shock if you don't.
3. Only when the surroundings around are brightly lit, use the machine instead of a dark environment.
4. You should not never place flammable material near the machine or avoid using the drill machine in the presence of anything flammable. The drill machine tends to produce sparks in the process of working, which may cause fire.
5. Children should never be allowed near the drill machine, especially when it is being operated.
6. Nobody should be in the area where the drill machine is being used by the Operator.

MANDATORY RULES TO ENSURE SAFETY

1. Before starting the drill machine, make sure you inspect the condition of the power cord and the plug. Replace them immediately if you see any damage.
2. The power supply should always be in sync with what the equipment requires. Hence, ensure the same while making sure that safety measures for grounding and leakage are made available.
3. Study this manual well to understand the do's and don'ts of the drilling tools. They should be used strictly according to the size specified. The material of the drilling workpiece comes with a magnetized absorption and works better on a smooth surface. Double check that its thickness ranges between 10mm-75mm, without the 0.5mm thickness of Iron scrap and the presence of paint, granular impurities and any other foreign particles should be avoided.
4. If the thickness of the drilling machine is less than 10mm, you must ensure that it is well-supported by iron plates right at the bottom that come with a thickness higher than 10mm. The supporting iron plate must have a base area greater than the drilling machine's area of the magnetic base if you need to improvise the reliability of the capability of the magnetic base's absorption. In case you opt for a supporting iron plate which is thinner than the requirement, you will notice the drilling machine magnet becoming loose in the process of absorption that may lead to unwanted and fatal accidents.
5. Don't press the drill machine too hard as that may lead to an overload, which tends to shorten the life of the magnetic drill. When in use, be extremely attentive to the condition of the magnetic absorption of the drill. Stop using the drill immediately if you notice any instability in the magnetic absorption.
6. Whenever the drill starts to operate or shuts down, ensure that the operating sequence of the motor and magnetic switch has been complied.
7. Do not continuously operate the magnetic base with a full load as that will cast a strong effect negatively on the life of the magnetic base. It may also get heated up to an extent that it may catch fire. Never touch the magnetic base, especially when it is extremely hot as that will cause a serious burn. Turn off the switch and unplug immediately once you stop using the magnetic base.
8. Do not use drilling machine for not more than a total duration of 30

minutes at a stretch. If done otherwise, it will lead to extreme heat getting generated that will result in a fire or explosion. Switch off the motor when it is not in use.

9. Add a certain amount of coolant to the equipment whenever you replace the drill. In case you notice a blockage, switch off the motor immediately. However, you must leave the magnetic base power on. The logic behind this process is that in case you shut down the power supply of the magnetic base directly, it may result in the operator suffering from injuries. It will also harm the motor because of the sudden loss of magnetic force of the magnetic base.
10. Whenever the magnetic drilling machine is in use and is suspended either in a vertical or a horizontal position, you must get it fixed with a device that gets attached to the equipment so that it doesn't come down falling caused by the sudden loss of power of the magnetic base. When you choose to drill in an upside-down position, always opt for cutting paste or cutting spray a cooling method that is reasonable. Say a frank NO to the option of liquid cooling method as liquid will easily infiltrate into the equipment and result in leakage of electricity. Instead of liquid cooling method, choose cutting paste or spray coolant.
11. Only use genuine spare parts and tools as it comes with guaranteed usage safety.
12. Do not remove the drill if the spindle and the drill are in continuous motion. Unplug the drill from the main power supply to change its gear and never touch it with your bare hands.
13. Even when the equipment stops working, never use your bare hands to remove the slug after the drilling process as it is very hot.
14. While using the magnetic drill on a particular workpiece, do not do the process of welding on the same work piece.
15. Use the handle function of the drilling machine to move it from one place to another instead of pulling the power cable.
16. Switch off the main power supply and unplug the drilling machine after the usage. If this is not done and the spindle and the tool continue to rotate, then do not let the operator remove the drill and replace the gear with his bare hands. Make sure you practice this to avoid injuries.
17. The generation of the magnetic field affects devices such as watches, mobile phones and pacemaker installed to regulate the heartbeat. Make sure that the operator takes off the watch and keeps off the mobile phone before operating the drilling machine and doesn't have a pacemaker installed in him.

CLEANING AND MAINTENANCE

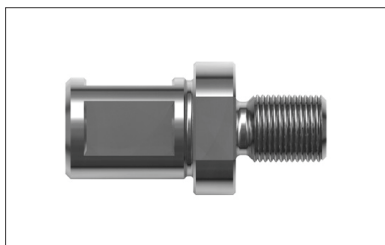
1. Keep a close check on the bolt of the magnetic drill. It should not be loose and the gap in the spindle should not be too large. The power cable of the drill should be in a good condition. You must make sure that the machine is maintained well.
2. Inspect the carbon brush and change it immediately if you notice that it is worn out.
3. The lubricating grease in the Gear Box should be changed by a professional once you have used the drill for three months. Inspect well once the professional finishes to double check that all the parts have been fully lubricated.
4. It is always the after-sales service department or the designated dealer who cater to the maintenance of the drill machine.
5. The operator must clean the magnetic drill after finishing the work, scrub the side where the drill slides while working and apply lubricating oil on the drill for the machine to last longer.
6. Whenever you indulge in the process of cleaning the Drill with compressed air, you must wear safety goggles and protective gloves to protect yourself and the other people around you at the workstation.
7. Switch the machine off and unplug it from the main power socket before you start the process of maintenance and cleaning.

When it comes to the process of maintenance, inspection and repair pertaining to their electrical aspects, only a qualified electrician must be contacted to cater to the task. The qualifications of these electricians change according to their respective countries. They must follow the effective rules put in place when it comes to processing, inspection and the maintenance of a Circuit Board in order to avoid accidents.

ENVIRONMENTAL PROTECTION AND WASTE DISPOSAL

1. Disposal of the old electrical equipment: Make sure you process the product in accordance with EC Directive 2002/96/EC-WEEE, also known as Waste Electrical and Electronic Equipment. In case of doubts or queries, contact the Department of Waste Disposal.
2. Disposal of grease: Follow the instructions given by the lubricant's manufacturer.

OPTIONAL TOOLS & ACCESSORIES



Weldon Drill Chuck Adaptor



Weldon Tapping Adaptor



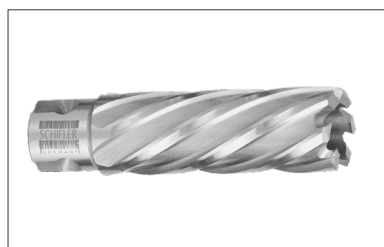
Drill Chuck



Weldon Counter Sink



MT 3 Arbour



Core Drill



Pilot Pin



Taper Drift

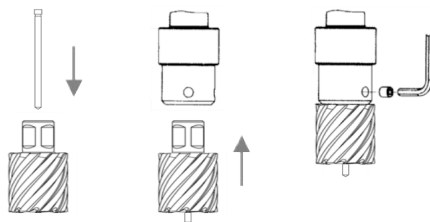
OPERATING MANUAL

5.1 How to mount tools or adapters in a Weldon arbor?

- 1) Make sure the machine is disconnected from the power supply.
- 2) Put the center pilot in the cutter hole.
- 3) Put the cutter or adapter in the arbor, making sure the flat sides are exactly in front of the arbor retaining screws.



- 4) Tighten the retaining screws.
- 5) Check if the center pilot can move inside the cutter (up and down).



5.2 Drilling with Core Drills

- 1 Place the machine at the desired position



CAUTION : For 100% magnet clamping force you need at least 10 mm of steel. Coatings, paintings and dirt between magnet and workpiece will affect clamping force.

- 2 Switch on the magnet.



- 3 Ensure that the magnetic drilling unit is secure on the working piece.
- 4 Fill the arbor with lubrication/cutting oil in the special meant holes. Always use cutting oil from your dealer.
- 5 Start the motor by pressing the green motor start button (I).



6. Fig. A depicts machine in manual mode. Bring handle lever down, once the pilot pin touches the surface, push the handle lever as shown in fig. B to initiate in automatic feed mode.
7. Once the hole is drilled the machine will automatically reverse to its original position and stop automatically.
8. Let machine reverse automatically to its original position in order to get grease rotate and motor to cool down.
9. SWC 35 AT is equipped with over load protection, machine stops automatically sensing over load avoiding cutter breakages.
10. If the slug gets stuck in the cutter, move the machine to a flat surface. Switch on the magnet and gently bring the cutter down in contact with the surface. This usually allows a slug to straighten and to eject.

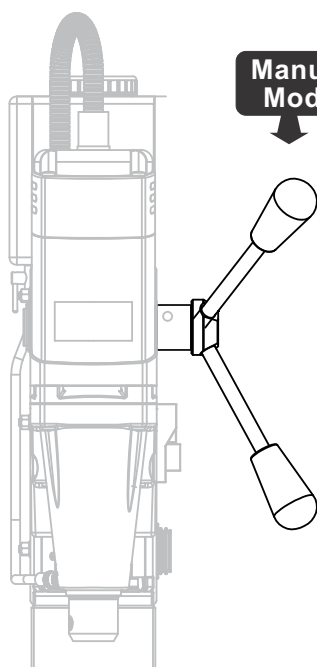


Fig. A

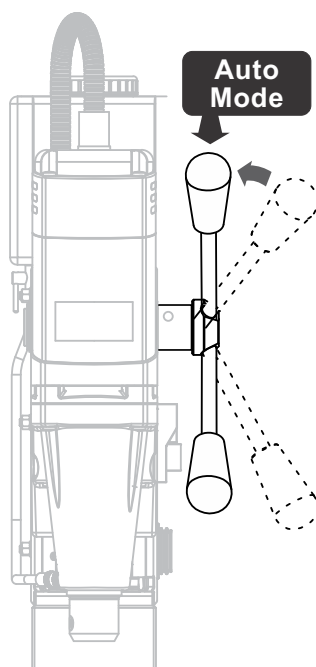


Fig. B

WARNING: THE SLUG WILL BE EJECTED AND IS VERY HOT

5.3 Drilling with twist drills

There are several accessories available to be able to use twist drills with your magnetic drill.

- Adapter 19 mm Weldon - ½"x20 UNF
- Adapter 19 mm Weldon – B16 taper connection
- Adapter 19 mm Weldon – B18 taper connection



Weldon Drill Chuck Adaptor



Drill Chuck

These adaptors will allow you to attach a drill chuck on to the hole cutter arbor.

Also twist drills with a direct Weldon connection are available (ranging from $\varnothing 6 - \varnothing 12$ mm)

- 1 Place the machine at the desired position
- 2 Switch on the magnet

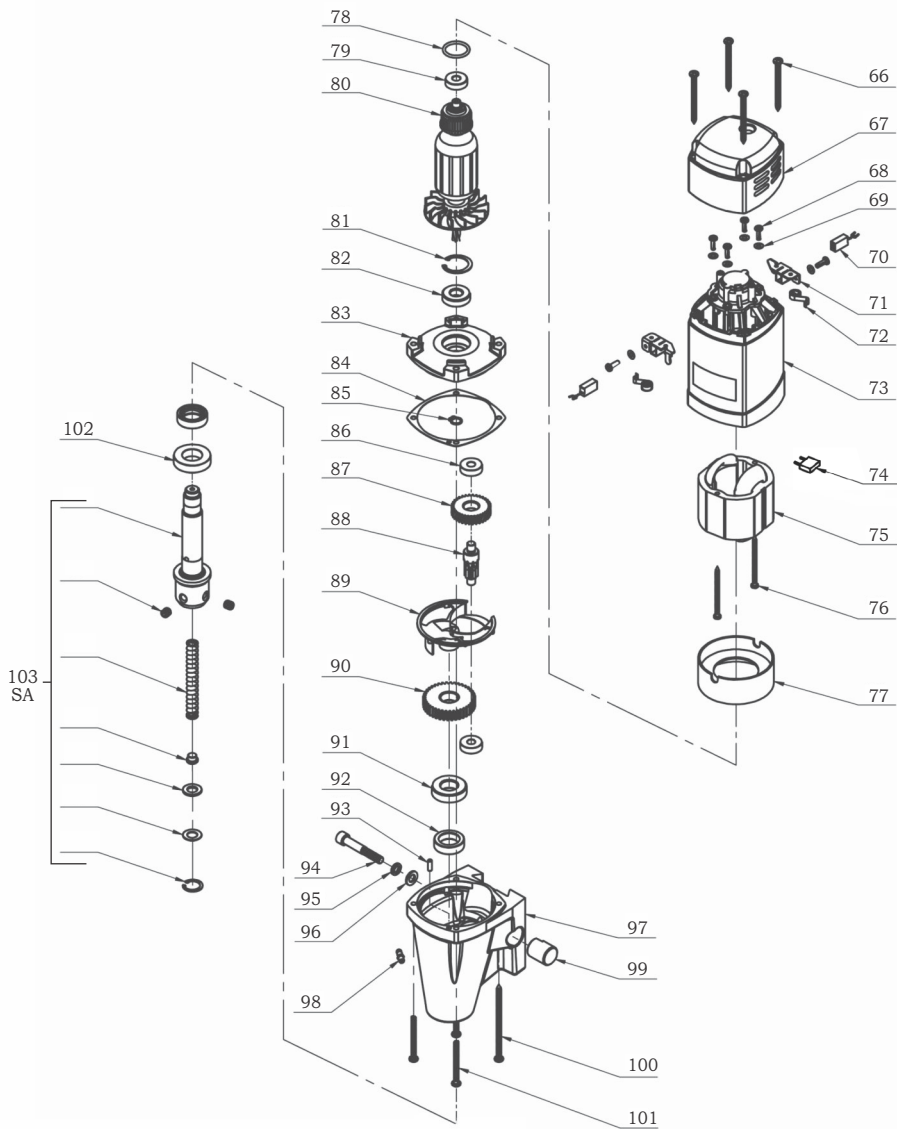


- 3 Ensure that the magnetic drilling unit is secure on the working piece.
- 4 Apply cutting oil to the twist drill and workpiece. Always use cutting oil from your dealer.
- 5 Start the motor by pressing the green motor start button.



- 6 Start bringing the twist drill to the workpiece but handle with care and do not apply too much pressure. The drill has to find its way in to the material by itself. It is not necessary to use a lot of pressure. Too much pressure will cause damage and breakage.
- 7 After the cutting is finished switch the machine off by pushing the red button.

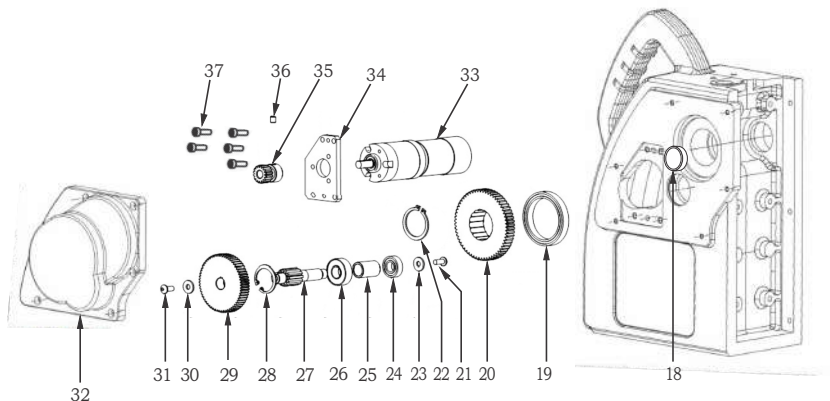
SWC 35 AT Motor complete / Antriebseinheit



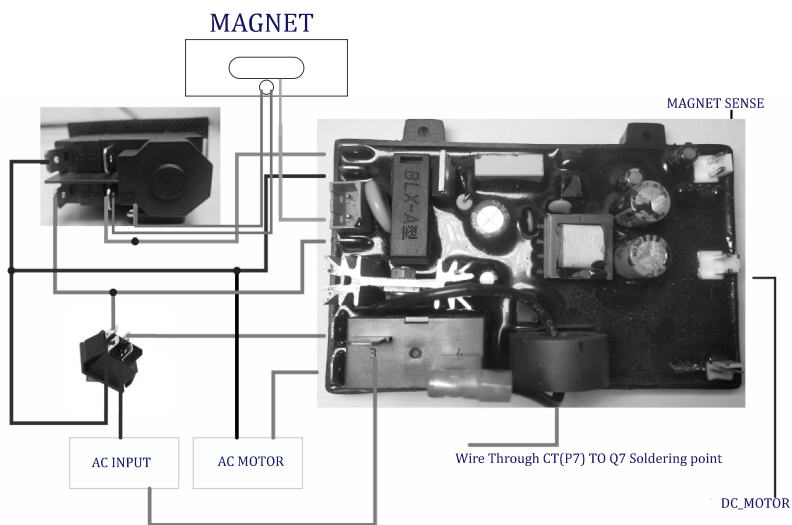
SWC 35 AT Motor complete / Antriebseinheit

Part no.	ARTICLE NO.	Article	Description	Pcs
66	0709311710775	Screw	ST4.8x60	4
67	0709311710782	Motor cap	SWC 35 AT	1
68	0709311710799	Screw	M4x12	6
69	0709311710805	Washer	M4	6
70	0709311710812	Carbon brush	18x6.2x9.9 220V	1
71	0709311710829	Carbon brush holder	18x6.2x9.9	2
72	0709311710836	Spring	5x0.3	2
73	0709311710843	Motor shell (black)	SWC 35 AT	1
74	0709311710850	Fuse	275V 0.1uf	1
75	0709311710867	Field coil	1100W 220V	1
76	0709311710874	Screw	ST3.9x62	2
77	0709311710881	Air Sleeve	ø75.5xø45x30	1
78	0709311710898	O-ring seal ring	ø22x2.5-	1
79	0709311710904	Ball Bearing	608ZZ P6	1
80	0709311710911	Armature	1100W 220V	1
81	0709311710928	Hole circlip	ø28	1
82	0709311710935	Ball Bearing	6001Z P6	1
83	0709311710942	Gear box cap	35-85x85x24	1
84	0709311710959	Paper gasket seal	ø78x0.5	1
85	0709311710966	Shaft circlip	ø10	1
86	0709311710973	Ball Bearing	608 P6	2
87	0709311710980	Helical gear	Z34mlh9	1
88	0709311710997	Pinion	Z8ml.25L45	1
89	0709311711000	Oil guide	ø78x22.6	1
90	0709311711017	Straight gear	Z40ml.25h10	1
91	0709311711024	Ball Bearing	6003-2RS P6	1
92	0709311711031	Skeleton ring	20x30x9	2
93	0709311711048	Cylindrical pin	ø4x12	1
94	0709311711055	Screw	M8x60-10.9	1
95	0709311711062	Spring Washer	M8	1
96	0709311711079	Washer	M8	1
97	0709311711086	Gear box	35-85x99x125	1
98	0709311711093	Brass nozzle	M6x16	1
99	0709311711109	Clamping block	ø20x24	1
100	0709311711116	Screw	ST4.8x90	2
101	0709311711123	Screw	ST4.8x50	2
102	0709311711130	Ball Bearing	61904-2RS P6	1
103	0709311711147	Drill spindle assembly	ø37xø19.05x136	1

SWC 35 AT Magnetic frame / Magnetbohrständer



SWC 35 AT Circuit Diagram / Schaltplan



SWC 35 AT Magnetic frame / Magnetbohrständer

Part No.	Article	Description
1	0709311710126	MAIN BODY
2	0709311710133	PCB
3	0709311710140	Screws
4	0709311710157	Washer
5	0709311710164	Magnetic base
6	0709311710171	Spring Washer
7	0709311710188	Hex Screws
8	0709311710195	Hex Screws
9	0709311710201	Hex Screws
10	0709311710218	Spring Washer
11	0709311710225	Slide SWC 50
12	0709311710232	Cable Mount
13	0709311710249	Rack
14	0709311710256	Gasket flat washer-A level
15	0709311710263	Hexagon round head screws
16	0709311710270	Slideway
17	0709311710287	R' Clip
18	0709311710294	BIMETAL BUSH
19	0709311710300	BALL BEARING
20	0709311710317	CLUTCH GEAR
21	0709311710324	Hex Screws
22	0709311710331	CIRCLIP
23	0709311710348	Washer
24	0709311710355	BALL BEARING
25	0709311710362	SPACER
26	0709311710379	BALL BEARING
27	0709311710386	TRANSMISSION GEAR SHAFT
28	0709311710393	CIRCLIP
29	0709311710409	SPUR GEAR
30	0709311710416	Washer
31	0709311710423	Screws
32	0709311710430	PLASTIC SHIELD
33	0709311710447	PLANETARY DC MOTOR
34	0709311710454	PROTECTION PLATE
35	0709311710461	PLANETARY MOTOR GEAR
36	0709311710478	Screws
37	0709311710485	Screws
38	0709311710492	Cable
39	0709311710508	Nylon wave tube
40	0709311710515	Straight wave tube fittings
41	0709311710522	Coolant Bottle Assembly
42	0709311710539	Coolant Bottle Lid
43	0709311710546	Coolant container
44	0709311710553	Hex Nut
45	0709311710560	Aluminium Valve
46	0709311710577	Hoop
47	0709311710584	PU TUBE
48	0709311710591	COOLANT NOZZLE
49	0709311710607	POWER CABLE
50	0709311710614	TORSION JOINT
51	0709311710621	Hex Screws
52	0709311710638	PANEL
53	0709311710645	MOTOR ON/OFF SWITCH
54	0709311710652	WATER PROOF MAGNET SWITCH
55	0709311710669	Screws
56	0709311710676	FEEDING HANDLE COVER
57	0709311710683	SHAFT
58	0709311710690	FEED HOUSING
59	0709311710706	MOVEMENT HANDLE
60	0709311710713	HANDLES
61	0709311710720	FEED GEAR SHAFT
62	0709311710737	GRASP SLEEVE
63	0709311710744	WASHER
64	0709311710751	SPRING WASHER
65	0709311710768	Hex Screws



6. Handy Tips

TIP: Do not use your magnetic drill on the same structure when ARC welding is in progress. D.C. current will earth back through the magnet and cause irreparable damage.

TIP: It is recommended that machine is laid to rest every 30 minutes in order to permit grease to run across the gear box.

TIP: When using models with gear and variable speed always select a setting with low transmission ratio and high motor speed, if possible.

TIP: During drilling it is recommended after a certain depth the cutter should be pulled up on free load in order to permit grease to run across the gear box.

TIP: For 100% magnet clamping force you need at least 10 mm of steel. Coatings, paintings and dirt between magnet and workpiece will affect clamping force.

TIP: Most situations which cause problems or question marks have already occurred for other users. Contact Schifler or your dealer to see if a solution exists for your situation. (example: for drilling into non-magnetic material with your magnetic drill, a special vacuum system has been designed).



WARNING: This appliance must be earthed.

WARNING: After drilling the slug will be ejected and is very hot.

WARNING: When drilling in inverted position, cutting oil can enter the motor and can cause irreparable damage.

WARNING: When drilling in inverted position, metal swarf can enter the motor. This can cause irreparable damage and can cause electrical shocks.

WARNING: Steel plates of less than 10 mm thickness, coatings, paints and dirt between magnet and workpiece can affect clamping force and create a possible dangerous situation. Always make sure your magnetic drill is fastened with the supplied safety chain and make sure your machine is sufficient attached to the workpiece to start drilling.



TROUBLESHOOTING

1. If the type of error that you face revolves around the Motor not starting even after pressing the ON/OFF button or the motor tends to stop while it is functioning, following can be the possible causes along with the remedies:
 - a. The plug isn't properly inserted into the socket. Just re-insert the plug.
 - b. The Circuit Breaker has been switched off by accident. Switch it on.
 - c. The torque cut-off has been triggered. You just have to switch the machine off for a few seconds and then switch it on.
 - d. You have missed selecting the direction of rotation. Click on select.
 - e. You haven't switched on the magnetic clamp. Switch it on.
 - f. The machine is over-heated because of which the internal safety switch of the machine is switching it off. Let the machine cool down for some time and then switch it on.
2. If the type of error that you face revolves around the Circuit Breaker tripping in the power distributor, following can be the possible causes along with the remedies:
 - a. The machine has some defective parts. Immediately contact the Customer Service.
 - b. Plenty of appliances have been connected to the same power circuit, resulting in the tripping. Unplug a few of those appliances.
3. If the type of error that you face revolves around the Magnetic clamp not functioning to its best capability, following can be the possible causes along with the remedies:
 - a. You have not switched on the magnet. Switch it on.
 - b. The surface where the machine is placed is not magnetic enough. Change the placement and use a suitable base.
4. If the type of error that you face revolves around the lubrication system not functioning to its best capability or failing to function at all, following can be the possible causes along with the remedies:
 - a. The lubricant is over. Pour the required amount of lubricant into the machine.
 - b. The connecting nipple has gotten clogged. Do a deep cleaning of the tank and the nipple.
 - c. The lubricant tap is jammed or has gotten closed. Open the tap.

Contact the Customer Service immediately if the steps and remedies described above do not solve your problem.

WARRANTY

The warranty period for Schifler Magnetic Drills equipment is 6 months as of the date of purchase.

Damages due to wear and tear, overload or improper handling of the machine are excluded from warranty. Damages that are due to fault in material or defect in fabrication will be remedied free of cost by compensation delivery or repair.

Claims for damages cannot be derived from this warranty.

Please fill out the warranty or add the purchase receipt.

MACHINE TYPE :

MACHINE NUMBER :

DATE OF PURCHASE :

STAMP/SIGNATURE AUTHORISED DEALERS :

ERROR DESCRIPTION:



European Union

Schiffler Werkzeuge & Co.
Bahnhofstraße. 8, 30159, Hannover, GERMANY
Tel.: +49 (0) 511 93639 421
Fax.: +49 (0) 511 93639 300
Email: info@schiffler.de

Asia Pacific

Schiffler Werkzeuge & Co.
B-24, 1st Floor, Street No.9, Anand Parbat
Industrial Area, Delhi-110005, INDIA
Telefon : 011-41044650
Email: india@schiffler.de

Middle East

Schiffler Werkzeuge Middle East FZC
UAQ Free Trade Zone, P.O. Box : 7073,
Umm Al Quwain, U.A.E.
Telefon : +971-568965572
Email : uae@schiffler.de

www.schiffler.de